


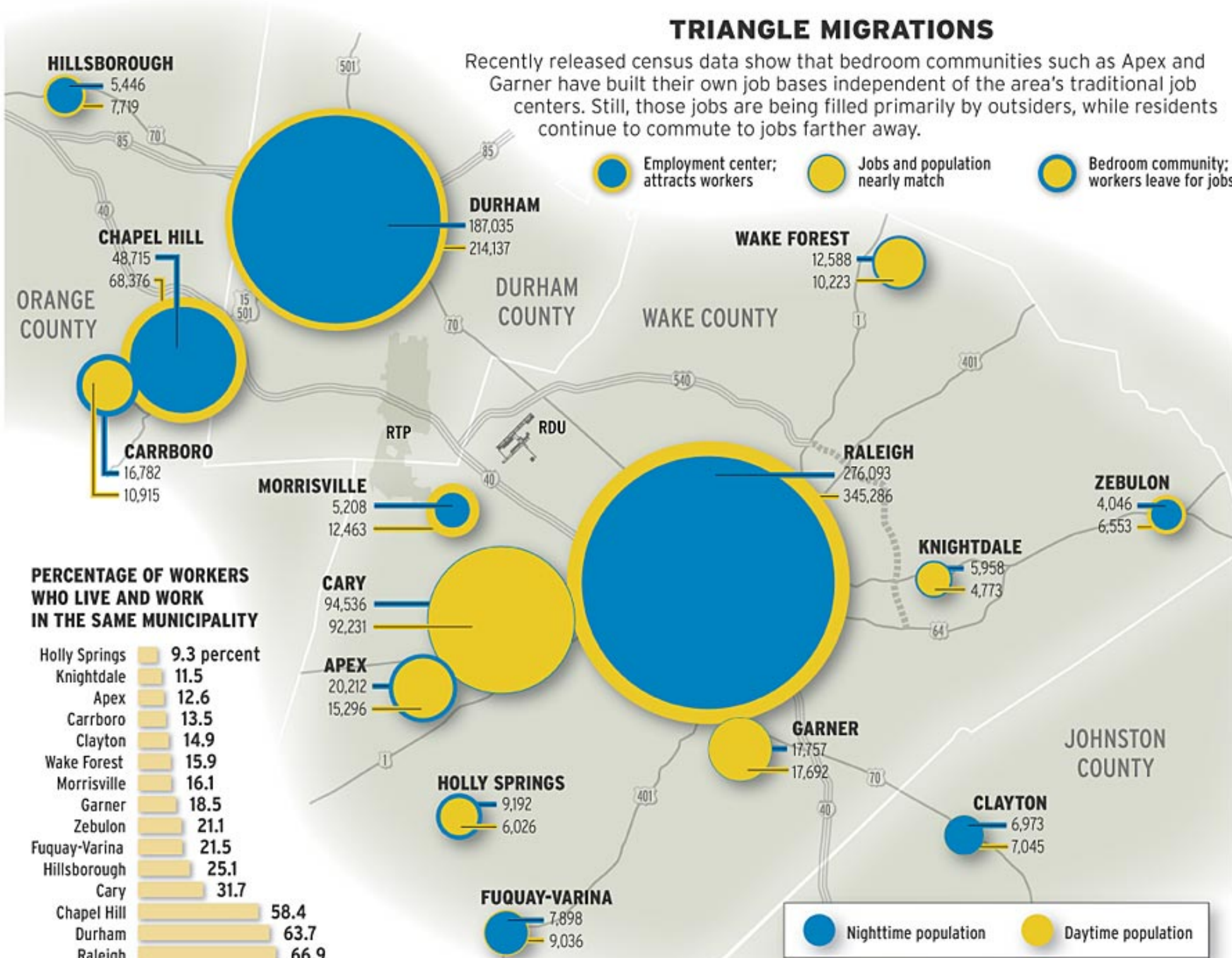


TRIANGLE MIGRATIONS

Recently released census data show that bedroom communities such as Apex and Garner have built their own job bases independent of the area's traditional job centers. Still, those jobs are being filled primarily by outsiders, while residents continue to commute to jobs farther away.

-  Employment center; attracts workers
-  Jobs and population nearly match
-  Bedroom community; workers leave for jobs



PERCENTAGE OF WORKERS WHO LIVE AND WORK IN THE SAME MUNICIPALITY

Holly Springs	9.3 percent
Knightdale	11.5
Apex	12.6
Carrboro	13.5
Clayton	14.9
Wake Forest	15.9
Morrisville	16.1
Garner	18.5
Zebulon	21.1
Fuquay-Varina	21.5
Hillsborough	25.1
Cary	31.7
Chapel Hill	58.4
Durham	63.7
Raleigh	66.9

 Nighttime population  Daytime population